



# Shipping Container Trailers

**“SETTING THE STANDARD IN SHIPPING CONTAINER TRAILERS”**

**Tri Star Manufacturing, Inc. 141 Industrial Industrial Park Drive Sweetwater, TN 37874**

**Phone: (423) 561-5474**

**Email: [sales@tristarmfg.us](mailto:sales@tristarmfg.us)**

**[shippingcontainertrailers.com](http://shippingcontainertrailers.com)**

# PORT 2 YARD™

The **Port 2 Yard** Shipping container trailer is designed as a lightweight, efficient, Shipping Container Trailer. Weighing in at under 6,000lbs with a GVWR of 21,000lbs, this lightweight trailer is designed to carry 1 - 40' Shipping Container, 1 - 45' Shipping Container (with 5' add-on extension), 1 - 20' Shipping Container, or 2 - 20' Shipping Containers.

The **Port 2 Yard** is a perfectly balanced Tri-Axle design that keeps tongue weight within the requirements of most truck manufacturers recommendations, while keeping your load secure and balanced behind you. It boasts a total of 8 twist locks with 6 of them being retractable eliminating the need to strap down your load, getting you in and out of Depots and Ports in an efficient manner.

- GVWR: 21,000lbs
- Actual Weight: 5,700lbs
- Axles: 3 each 7,000lb Axles
- Tires: 8 Lug ST235/80R16  
10 ply Load Rating E
- Brakes: Electric (All Axles)
- Overall: Length 51'
- Deck Length 41'
- Overall: Width 98.5"
- Lighting: 12v LED
- Built in Toolbox
- Jacks: 2 each 12k hydraulic
- Spare Tire: 1  
(Pictured with 2 Spares)
- Steel Construction: A992/A572  
Structural I Beams
- Coupler: Wind Down 30k for 2 5/16"  
Ball
- 8 Each Shipping Container Twist Locks
- Flatbed Height: 42"
- Deck Height: 37"

**Tri Star Manufacturing, Inc. 141 Industrial Industrial Park Drive Sweetwater, TN 37874**

**Phone: (423) 561-5474**

**Email: [sales@tristarmfg.us](mailto:sales@tristarmfg.us)  
[shippingcontainertrailers.com](http://shippingcontainertrailers.com)**

# PORT 2 YARD™

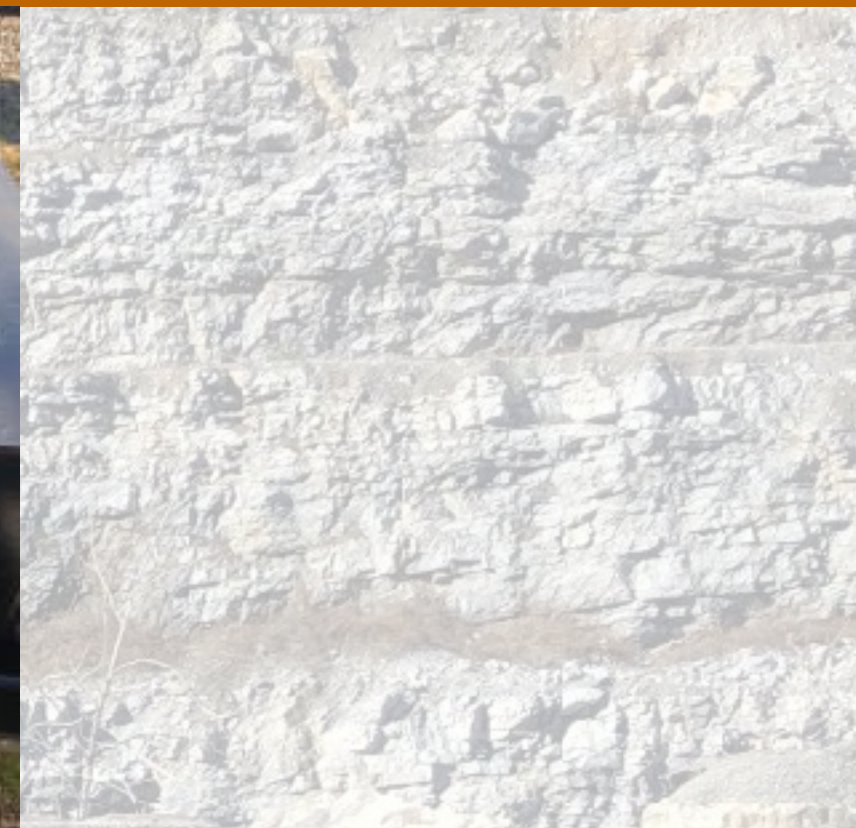
# Features



**Gooseneck Design**



**Retractable Twist-Locks**



**Unique Tri-Axle Design**

- DOT Approved in all 50 States
- Extremely Lightweight
- No Strapping or Lashing Required
- Multi-Use Design
- Industry Tough

- Versatile
- Built to Last
- Time Saving Design
- Ample Tool Storage
- Fast Load and Unload Design

**Tri Star Manufacturing, Inc. 141 Industrial Industrial Park Drive Sweetwater, TN 37874**

**Phone: (423) 561-5474**

**Email: [sales@tristarmfg.us](mailto:sales@tristarmfg.us)  
[shippingcontainertrailers.com](http://shippingcontainertrailers.com)**